



Peace
Buildcon

STOP
RISER

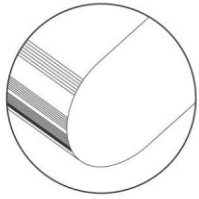
**FULL
BODY** | 300x1200mm
200x1200mm

The Style Of Heights

STEP & RISER

The step & riser tiles are created keeping in mind the need to install tiles in stairways or such high spaces. Our step & riser tiles are designed with a bullnose edge to avoid any harm that might occur due to sharp-edged tiles while climbing up or stepping down. These tiles come in 15mm thickness and with an anti-skid surface to provide a comfortable and durable experience.





BULL NOSE PROTRUSION

The Bull Nose Protrusion is the key feature of our step and riser collection. The feature offers several advantages, which ensure security, ease in use, and also a distinctive look to your staircase. The round edge prevents extensive bodily harm in case of impacts and also experiences less wear and tear after extensive use.

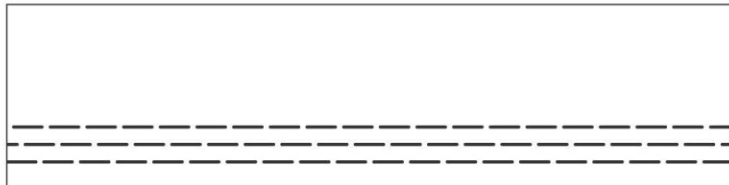


SELF EMBOSSED THREAD LINES

The step tiles of the collection consist of self embossed lines at the end of tiles to ensure grip to the user of the staircase. The feature makes the tiles antiskid and also aids ease in use. The thread lines are of the same color and the look of the tiles making your staircase look seamless.

STEP

300x1200mm



RISER

200x1200mm



SELF EMBOSSED TREAD LINES

ANTI-SKID SURFACE

FULL BULL NOSE EDGE

FULL BODY

THICKNESS 12mm

APPLICATION AREAS



Indoor



Outdoor



Swimming Pool



Fire Exit



University



Hospital



Shopping Mall



Airport

SAFETY FOR SENIOR CITIZENS, PHYSICAL DISABLES & CHILDREN

The specially designed step & riser aids the elderly, physically challenged, and children through its safety features. The bullnose protrusion prevents major harm the threads of the tiles aids with antiskid features. The embossed threads especially aid access by the specially-abled through the feel of embossed impression.



Easy To
Maintain



Easy To
Clean



Waterproof



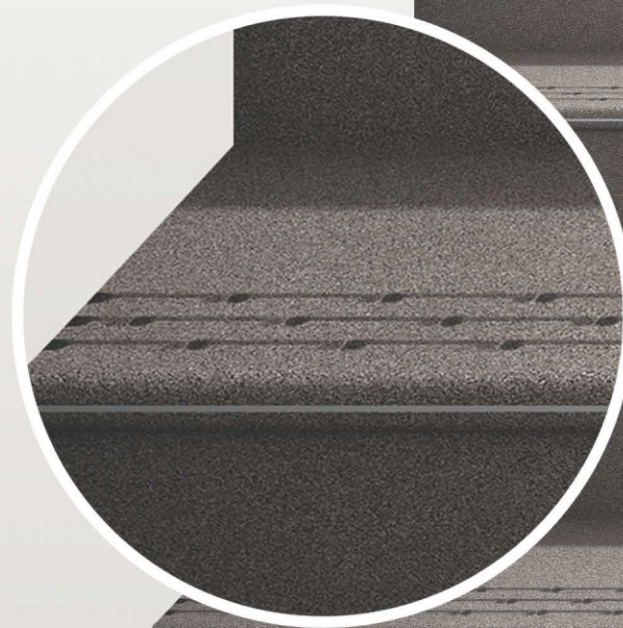
Frost
Resistant



Stain
Resistant



Resistant To
Chemicals



MAGIC
ALMOND

**FULL
BODY**

FINISH
GLOSSY & Matt

STEP

300x1200mm



RISER

200x1200mm



MAGIC
CORN SILK

**FULL
BODY**

FINISH
GLOSSY & Matt



STEP

300x1200mm



RISER

200x1200mm



MAGIC
GOLD

**FULL
BODY**

FINISH
GLOSSY & Matt

STEP

300x1200mm



RISER

200x1200mm



MAGIC
GRAFFITY

**FULL
BODY**

FINISH
GLOSSY & Matt

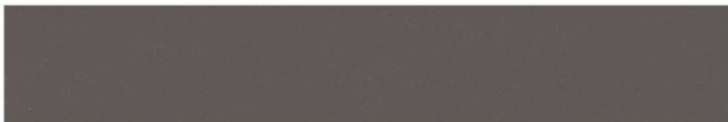
STEP

300x1200mm



RISER

200x1200mm



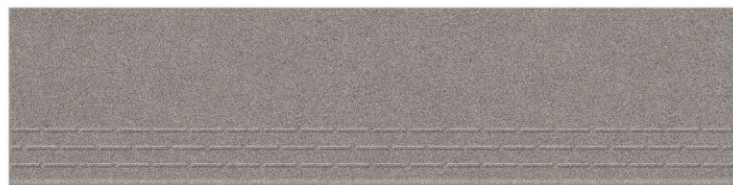
MAGIC
GRAY

**FULL
BODY**

FINISH
GLOSSY & Matt

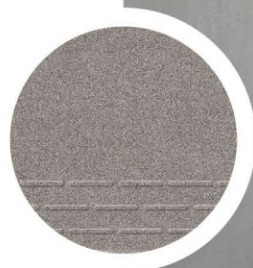
STEP

300x1200mm



RISER

200x1200mm



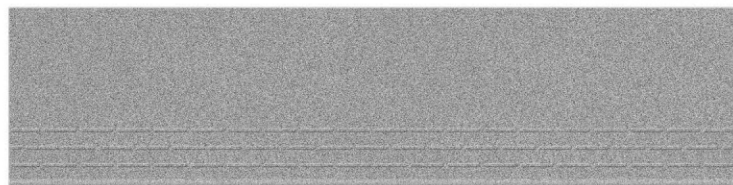
MAGIC GRIS

**FULL
BODY**

FINISH
GLOSSY & Matt

STEP

300x1200mm



RISER

200x1200mm



MAGIC
IRON

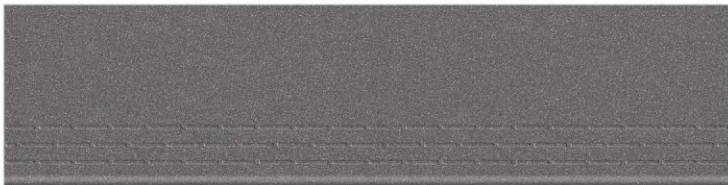
**FULL
BODY**

FINISH
GLOSSY & Matt



STEP

300x1200mm



RISER

200x1200mm



MAGIC
NERO

**FULL
BODY**

FINISH
GLOSSY & Matt

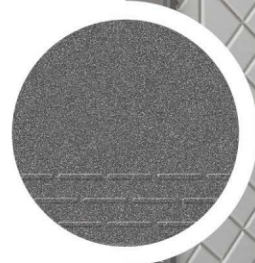
STEP

300x1200mm



RISER

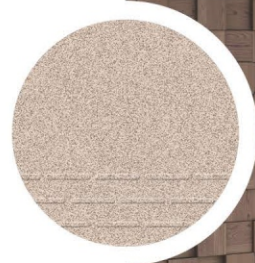
200x1200mm



MAGIC
PEACH

**FULL
BODY**

FINISH
GLOSSY & Matt



STEP

300x1200mm



RISER

200x1200mm



MIGIC
SILVER

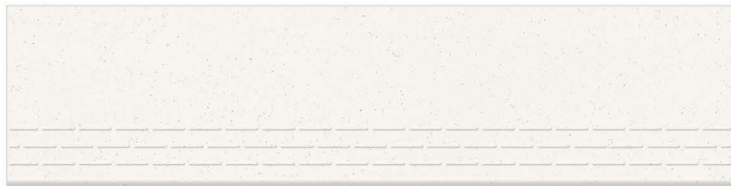
**FULL
BODY**

FINISH
GLOSSY & Matt



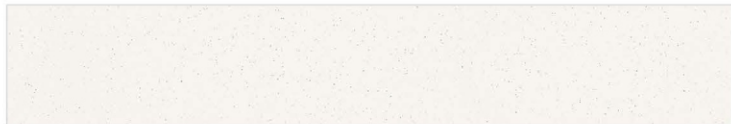
STEP

300x1200mm



RISER

200x1200mm





KEVIN CERAMICS PVT. LTD.
8-A NATIONAL HIGHWAY,
SURVEY NO. 97//P1 AND 100/P4,
B/H MAKANSAR VID, SARTANPAR ROAD,
WANKANER, Morbi, Gujarat, 363621

+91 7486044550

export@peacebuildcon.com

www.peacebuildcon.com

Follow us on :

